

Road Map



Hybrid Map



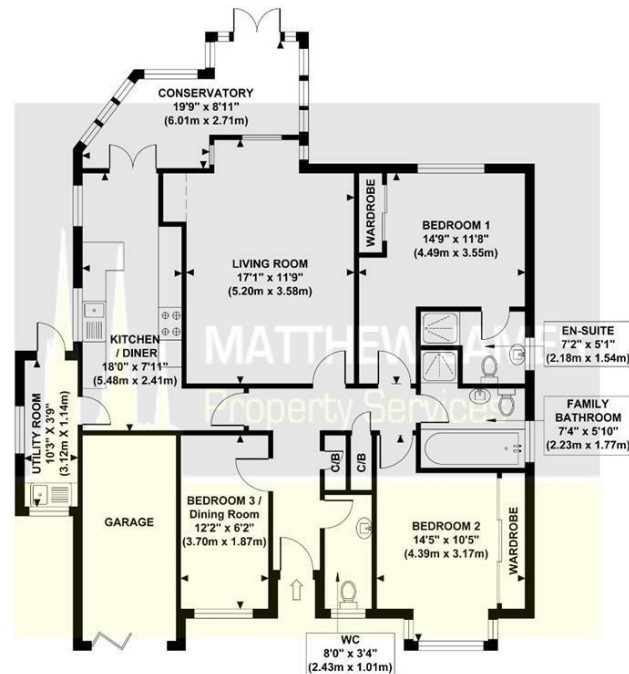
Terrain Map



**MATTHEW JAMES**  
Property Services

Floor Plan

**567 WESTWOOD HEATH ROAD**  
Approximate Gross Internal Area  
1094 sq ft / 101.60 sq m (Including Garage)



**GROUND FLOOR  
GROSS INTERNAL  
FLOOR AREA 1094 SQ FT**

Although every attempt has been made to ensure accuracy, all measurements are approximate and no responsibility is taken for any error, omission, or mid-statement. This floor plan is for illustrative purposes only and not to scale. Measured in accordance to RICS standards.



**567 Westwood Heath Road**

Westwood Heath, Coventry CV4 8AA

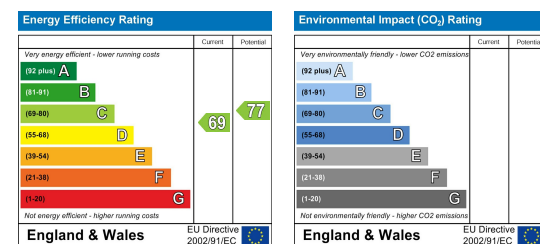
**£475,000**



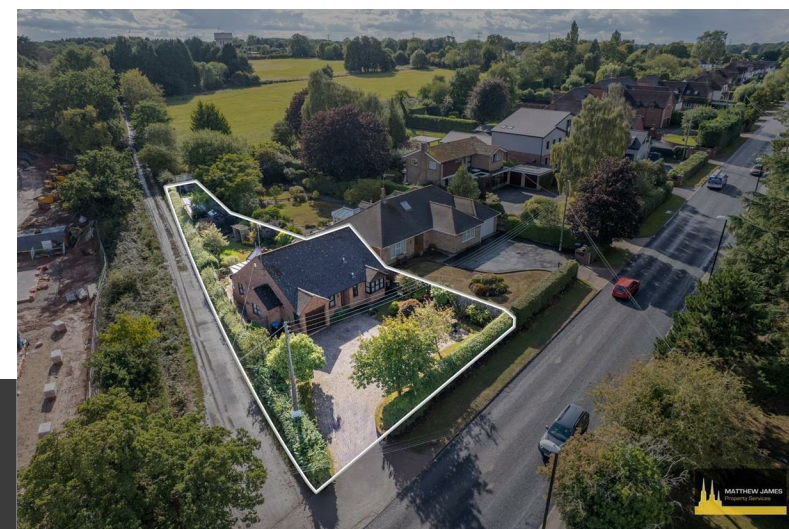
Viewing

Please contact us on 02477 170170 if you wish to arrange a viewing appointment for this property or require further information.

Energy Efficiency Graph



These particulars, whilst believed to be accurate are set out as a general outline only for guidance and do not constitute any part of an offer or contract. Intending purchasers should not rely on them as statements of representation of fact, but must satisfy themselves by inspection or otherwise as to their accuracy. No person in this firm's employment has the authority to make or give any representation or warranty in respect of the property.



CONTACT INFORMATION

24a Warwick Row, Coventry CV1 1EY

02477 170170

info@matthewjames.uk.com

www.matthewjames.uk.com

Facebook

Twitter

# 567 Westwood Heath Road

Westwood Heath, Coventry CV4 8AA

£475,000



Approach/ Driveway

Entrance Hallway

W.C

8'0 x 3'4

Bedroom Three/ Dining Room

12'12 x 6'2

Living Room

17'1 x 11'9

Bedroom One

14'9 x 11'8

En-Suite Shower Room

7'2 x 5'1

Bedroom Two

14'5 x 10'5

Family Bathroom

7'4 x 5'10

Kitchen/ Dining

18'0 x 7'11

Utility Room

10'3 x 3'9

Conservatory

19'9 x 8'11

Rear Garden

Garage

Aerial Views

